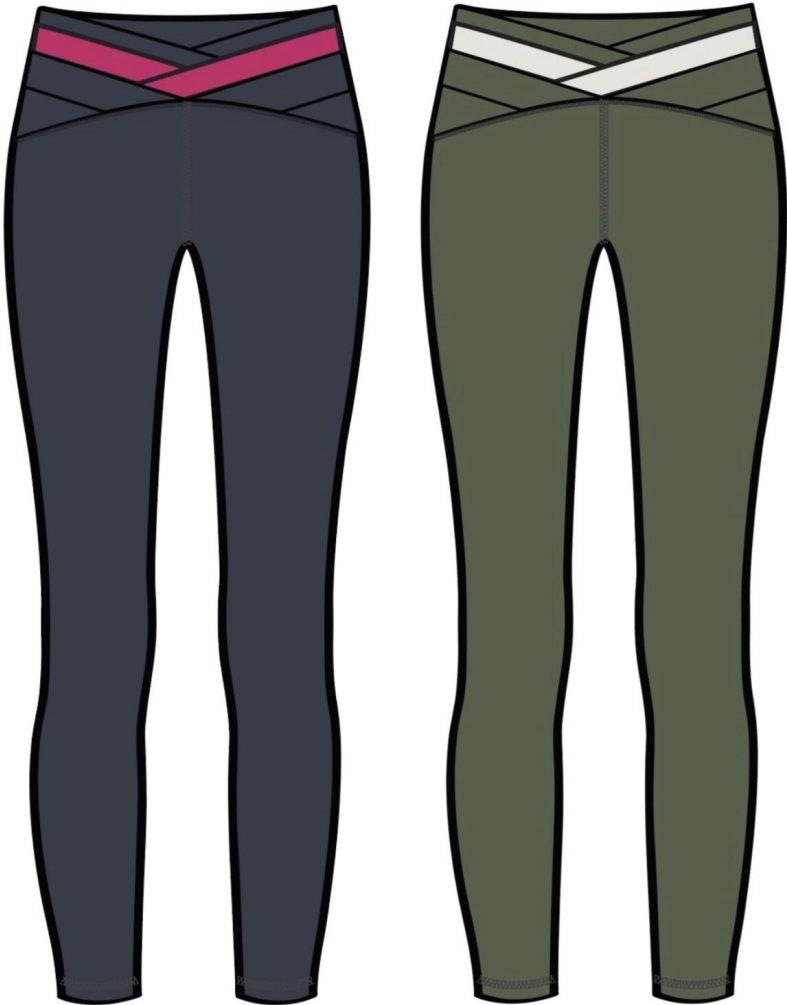


ENDURANCE CRISS CROSS LEGGINGS

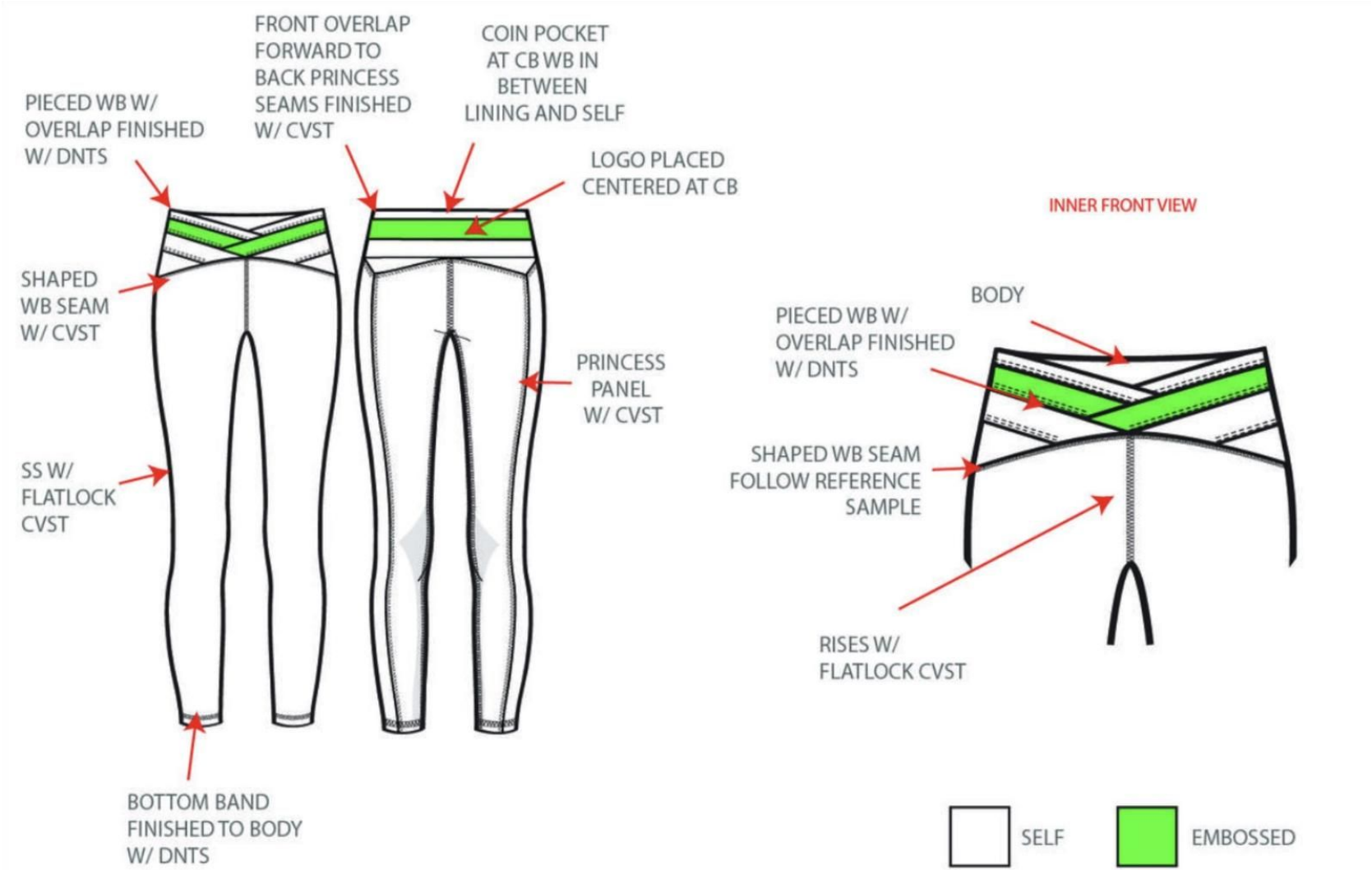
Name	ENDURANCE CRISS CROSS LEGGINGS
Style No.	O61237
Brand	O
Division	10
Category	BOTTOMS
Season	4
Year	22
Size Scale	<b>S</b> -Sample size

**XS** **S** **M** **L** **XL** **XXL**

DEVELOPMENT STATUS	PPS
DELIVERY	D
1ST PTRN #	STYLE REF: O68422-3
CARE INSTRUCTIONS	MACHINE WASH COLD WITH LIKE COLORS DO NOT BLEACH TUMBLE DRY LOW COOL IRON IF NEEDED DO NOT DRY CLEAN
CATEGORY	FUNCTIONAL PANTS
SAMPLE SIZE	S
CUT QTY	1
Tech Pack Release Date	06-15-2022
DUE DATE	07-06-2022
COUNTRY OF ORIGIN	CHINA
Photo Shoot Sample Due	10-17-2022
Carry Over	Yes
PP Approval Date	09-26-2022
Created by/Author	Emily Moore emoore@johnnywas.com



Screen Shot 2022-06-16 at 12-1



Screen Shot 2022-06-15 at 11-1



STYLE #: O68422-3 DESCRIPTION: CRISS CROSS LEGGINGS SEASON: 3.30 DESIGNER: ADRIANA



callouts-05




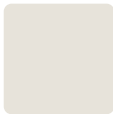




- "e" Celestial Blue = 14-4210 TCX
- grey - Griffin = 17-5102 TCX
- "Made In China" Avenir Next medium 8pt, 25 pt kern
- "XS" Avenir Next bold 9.2pt, 25 pt kern

Calme\_Final 2 ScreenPrint\_made\_in\_CHINA

Sample Size: S

POINT OF MEASURE	CODE	HOW TO MEASURE	CRITICAL	TYPE	TOLERANCE	S
WAIST WIDTH - RELAXED	rXOyvX	AT TOP EDGE	true	Full	1/4 in	12 5/8 in
WAIST WIDTH - RELAXED	6pms40	AT SEAM	true	Half	1/4 in	13 1/4 in
WAIST WIDTH - EXTENDED	JYP46L	AT SEAM	true	Half	1/4 in	18 in
WAISTBAND HEIGHT	9Bb54x	AT CF AND CB - SEAM TO EDGE	true	Full	1/8 in	3 1/2 in
FRONT RISE	tN2upo	TOP OF WB TO CROTCH POINT	true	Full	1/4 in	9 3/4 in
BACK RISE	eUjU7W	TOP OF WB TO CROTCH POINT - INCL GUSSET	true	Full	1/4 in	13 1/4 in
LOW HIP WIDTH	IdBcJp	3PT - 3" UP FROM CROTCH PT	true	Half	1/4 in	14 3/4 in
THIGH WIDTH	7W15F9	1" FROM CROTCH SEAM	true	Half	1/8 in	9 1/4 in
KNEE WIDTH	LTFIsk	13" FROM CROTCH POINT	true	Half	1/8 in	5 1/2 in
CALF WIDTH	28BwJC	18" FROM CROTCH WIDTH	true	Half	1/8 in	5 1/4 in
LEG OPENING WIDTH	LTLiTR	ALONG BOTTOM EDGE - STRAIGHT	true	Half	1/8 in	3 3/4 in
BOTTOM HEM HEIGHT	QlJzPv	SEAM TO EDGE	true	Full	0 in	3/4 in
INSEAM	r0I5EH	CROTCH POINT TO BOTTM EDGE	true	Full	1/4 in	26 1/2 in
GUSSET LENGTH	38vQ27	FRONT RISE TO BACK RISE	true	Full	1/8 in	1 3/4 in
GUSSET WIDTH	ZYilrc	INSEAM TO INSEAM	true	Full	1/8 in	1 1/2 in

THUMBNAIL	COMPONENT	QTY	PLACEMENT	NOTES	BLUE NIGHT CODE: BLN	BRONZE GREEN CODE: BRG
FABRICATIONS						
1	 <div>SOLID ACTIVE COMPRESSION FABRIC (AAG) CODE: DPS022J Content: 71% Polyester 29% Spandex Supplier: ACTIVE APPAREL GROUP Construction: INTERLOCK</div>		SELF, Place on waistband, front and back of legging	FOLLOW CAD FOR PLACEMENT	 <div>Blue Nights Custom Code: 19-4023 TCX</div>	 <div>Bronze Green Custom Code: 18-0317 TCX</div>
2	 <div>SOLID ACTIVE COMPRESSION FABRIC (AAG) CODE: DPS022J Content: 71% Polyester 29% Spandex Supplier: ACTIVE APPAREL GROUP Construction: INTERLOCK</div>		SOLID CONTRAST WB OVERLAP DETAIL	FOLLOW CAD AND CONSTRUCTION PAGE FOR PLACEMENT	 <div>Pink Peacock Custom Code: 18-2045 TCX</div>	 <div>TOFU Custom Code: 11-4801 TCX</div>
THREADS						
3	 <div>Sewing Threads (DTM POLY THREAD) CODE: C00049</div>		DTM SELF			
TRIMS						
4	 <div>CALME SCREEN PRINT LOGO REFLECTIVE CODE: MO2W5</div>	1	CENTERED AT CB WB		 <div>Pewter Custom Code: 18-5203 TCX SIZE: 3/4"</div>	 <div>Pewter Custom Code: 18-5203 TCX SIZE: 3/4"</div>
5	 <div>STRETCH ELASTIC FOR ACTIVE (AAG) CODE: EPR238 Supplier: ACTIVE APPAREL GROUP</div>		ENCASED IN WB TOP EDGE	3/4" WIDTH	 <div>3/4" BLACK ELASTIC</div>	 <div>3/4" BLACK ELASTIC</div>
LABELS AND HANGTAGS						
6	 <div>CALME SCREEN PRINT LABEL- LOGO /SIZE /COUNTRY OF ORIGIN CODE: CALME-SP01</div>	1	inside CB waist, centered			

THUMBNAIL	COMPONENT	QTY	PLACEMENT	NOTES	●BLUE NIGHT CODE: BLN	●BRONZE GREEN CODE: BRG
7	 <b>NEW CARE LABEL FOR CALME-FACTORY SUPPLIED</b> CODE: CALME-CC		inside waistband seam on wearer's left		-	-
8	 <b>NEW CALME HANGTAG</b> CODE: TOP CARD- CALME-T01P-R, BOTTOM CARD- CALME-T02	1	Outside WB SS Wearer's Left		-	-
Components 8						