



CONSTRUCTION CALLOUTS

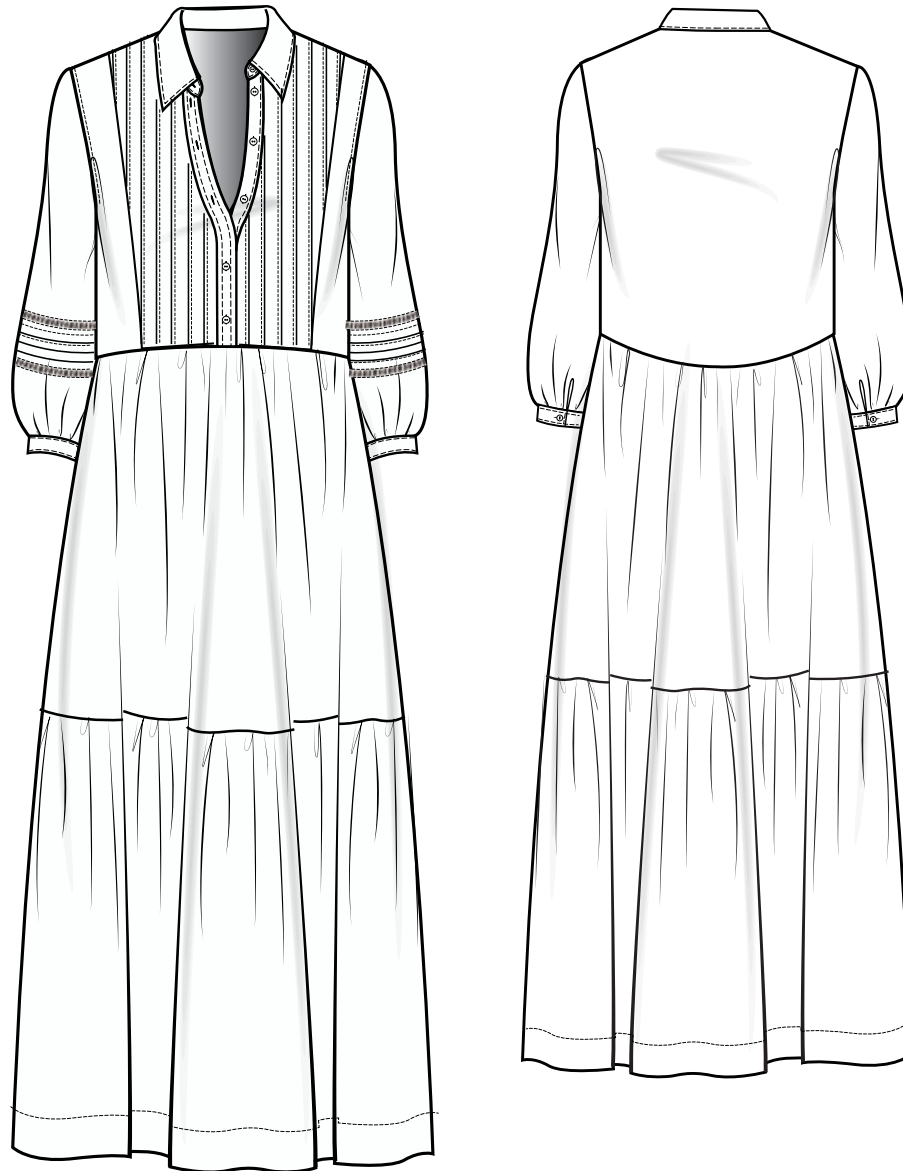
SEASON:
Fall

STYLE #:
XX

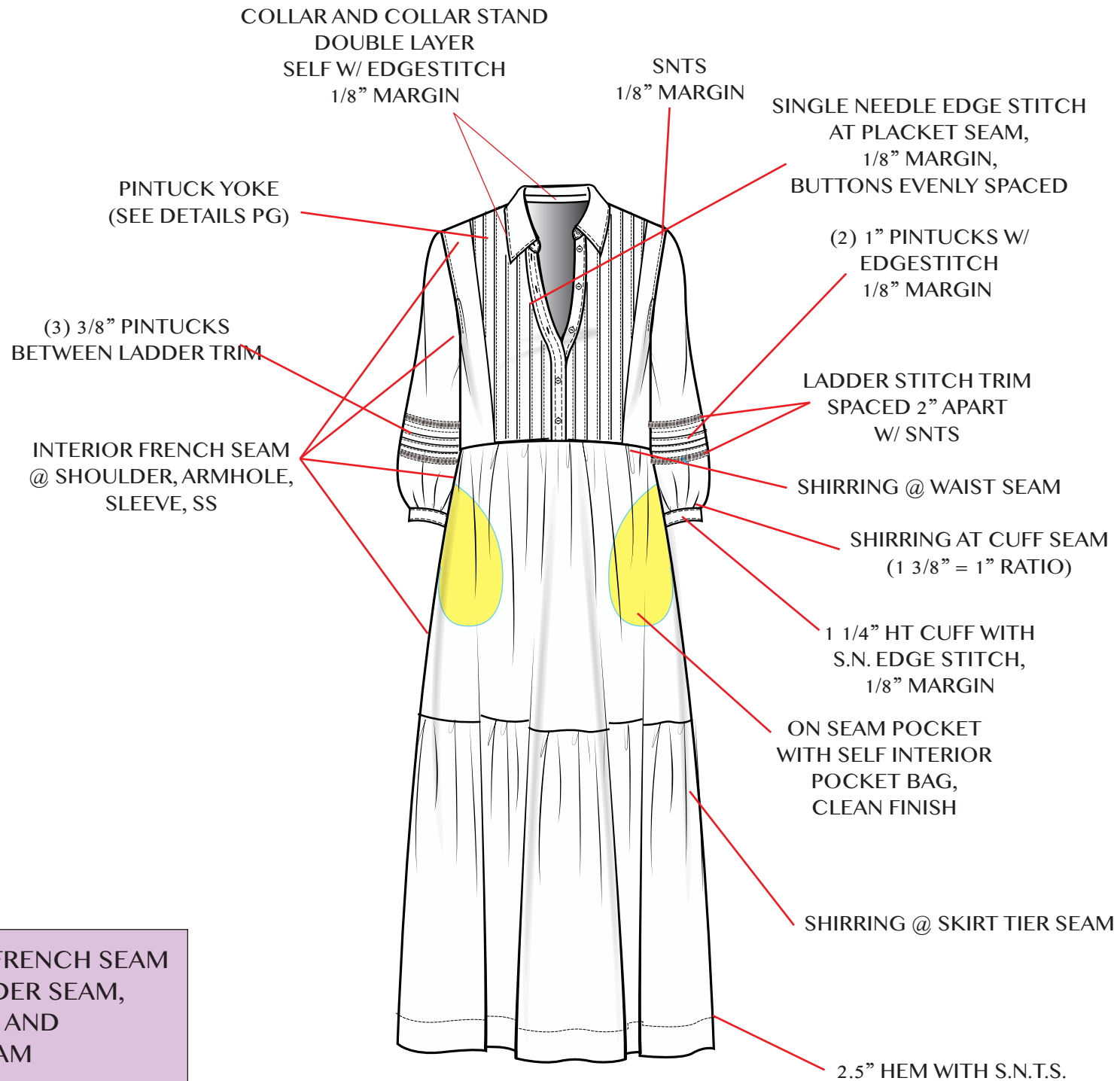
DELIVERY:
XX

DESCRIPTION:
TIERED HENLEY MIDI DRESS

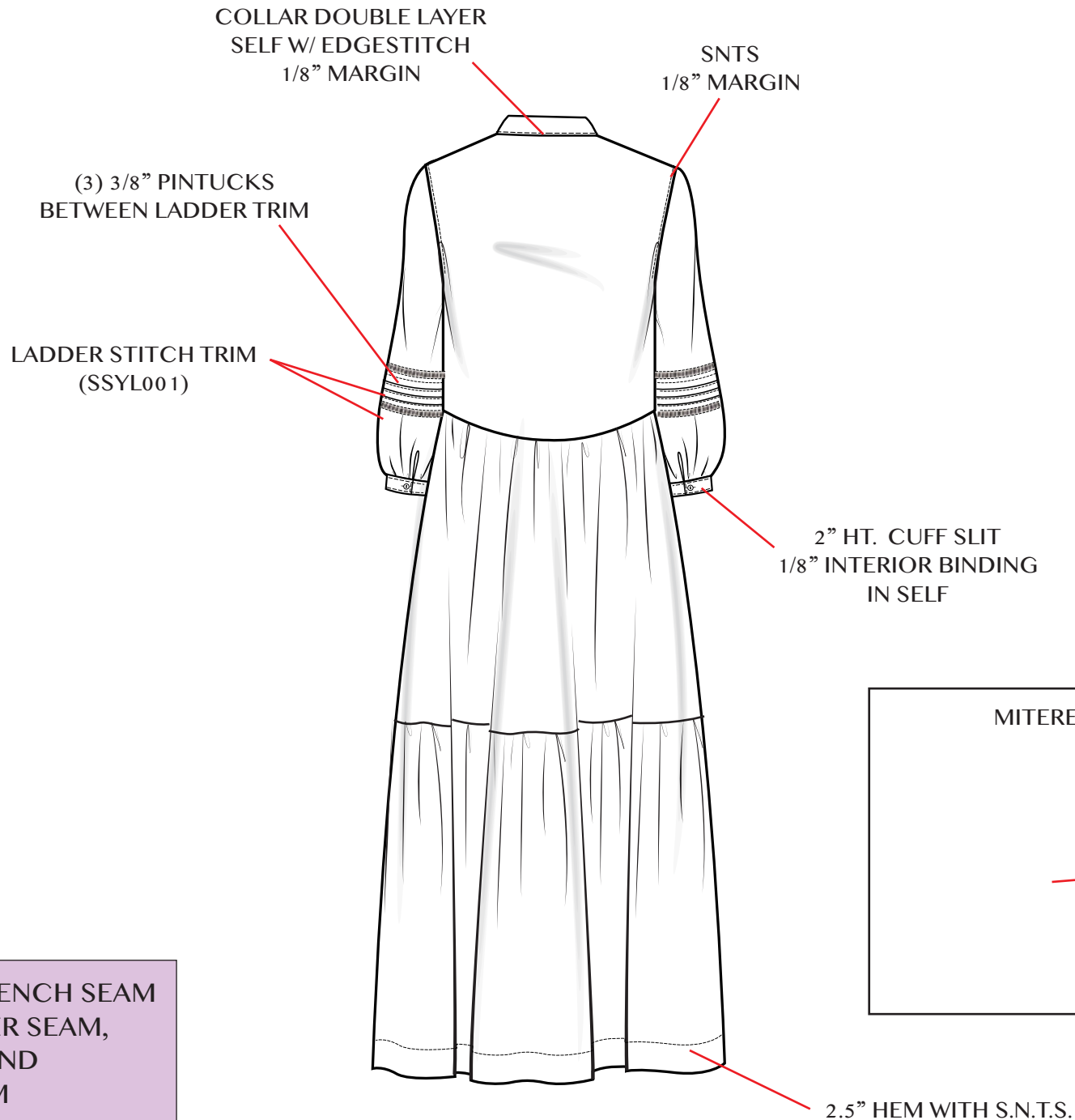
New style, please create patterns following sketches, callouts and specs.



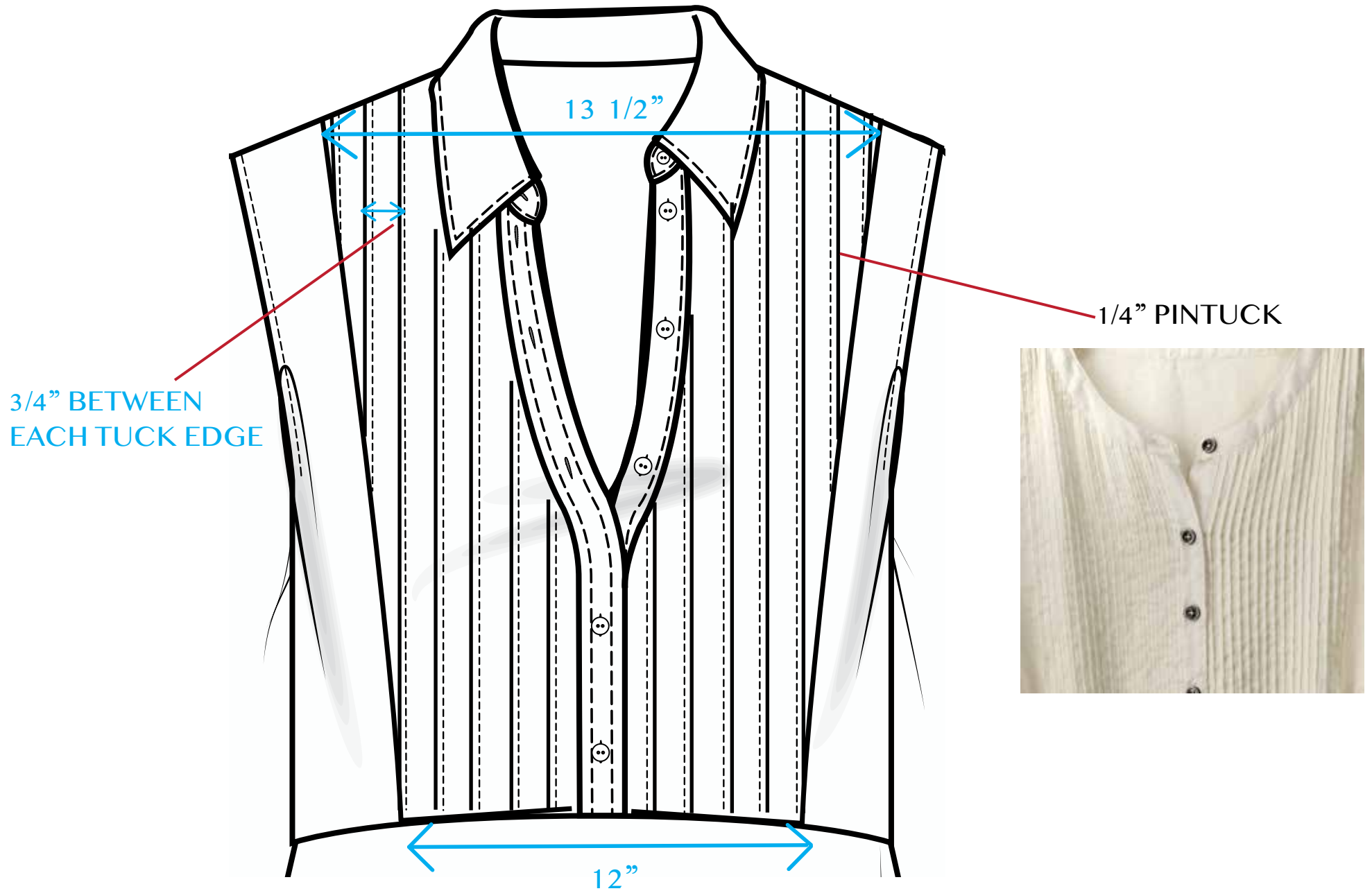
FRONT



BACK

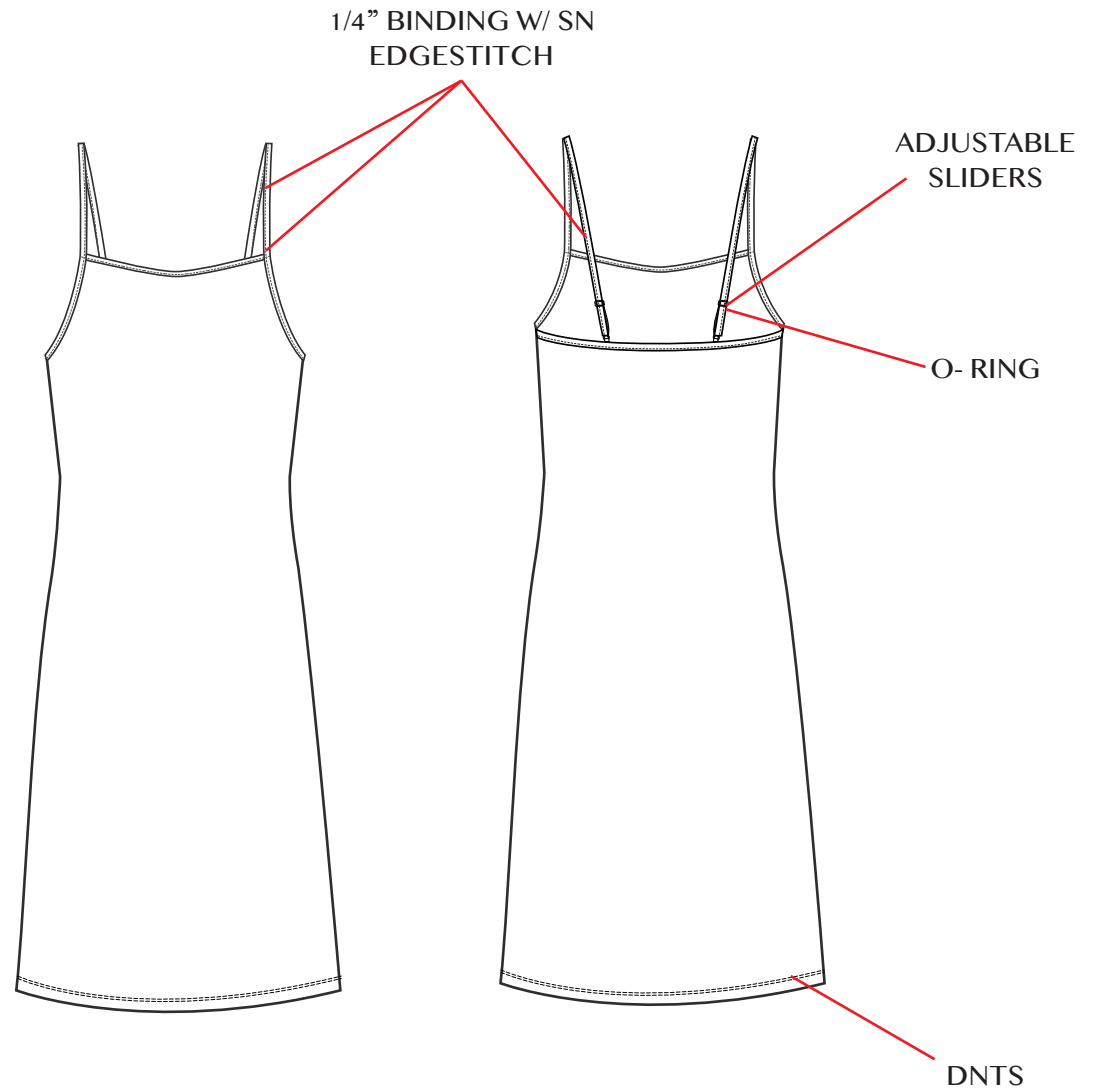
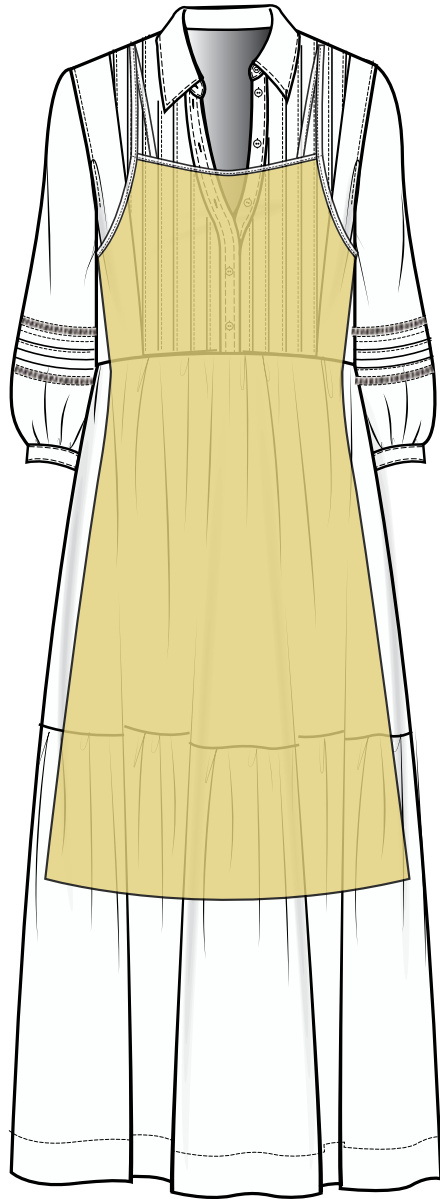


PINTUCK DETAIL



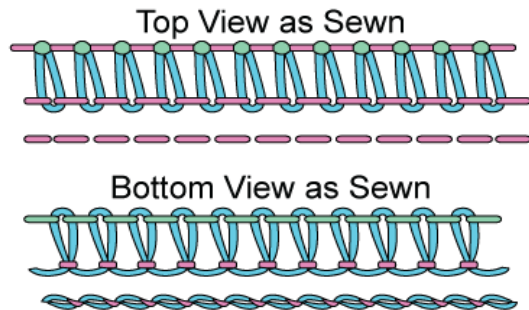
INTERIOR SLIP DRESS

SEPARATE; NOT ATTACHED TO BODY

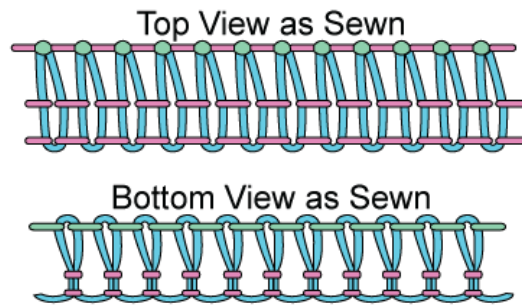


THREADS & STITCHING DETAILS

5 Thread Safety Stitch



4 Thread Overlock



Single Needle Lockstitch

